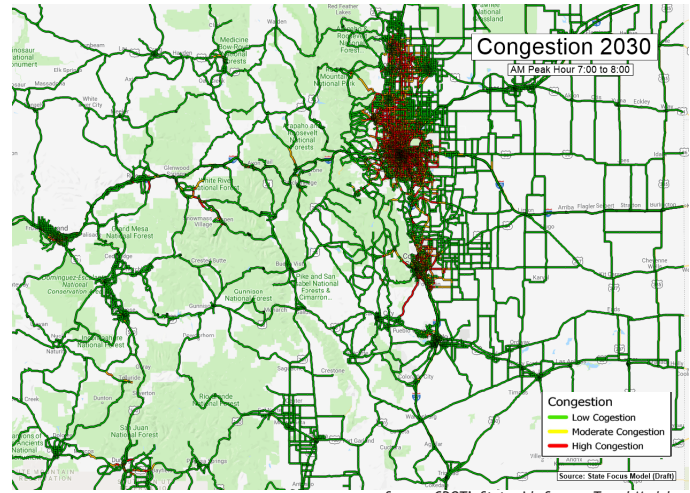
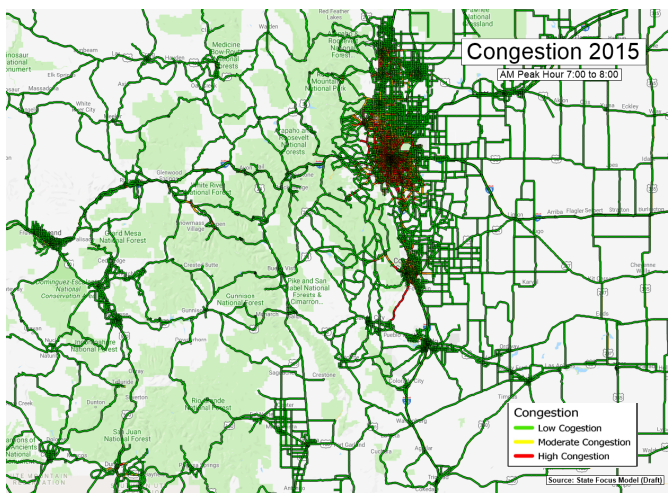


CDOT is having conversation with the public and stakeholders that will take a fresh look at transportation priorities. Data analysis tools like CDOT's Statewide Travel Model provide us with a glimpse into the future travel challenges we will face. This new tool will play a key role in transportation decision-making.

CDOT's Statewide Travel Model provides information on how travel will change for the public in the years to come and provides insights into the relationship between peoples' travel characteristics, population growth, and travel choices.

CDOT's travel model is predicting a significant concentration of congestion along Colorado's Front Range and the severity of that congestion will grow significantly over the next 10-years. Learn more about the details of [the travel model by clicking here](#).



As displayed in these maps, increasing traffic volumes over the next 10-years will exceed the capacity for many State Highway and Local Roadway systems, especially along Colorado's Front Range. This anticipated congestion will only be exacerbated with increased population growth and the aging of Coloradans.

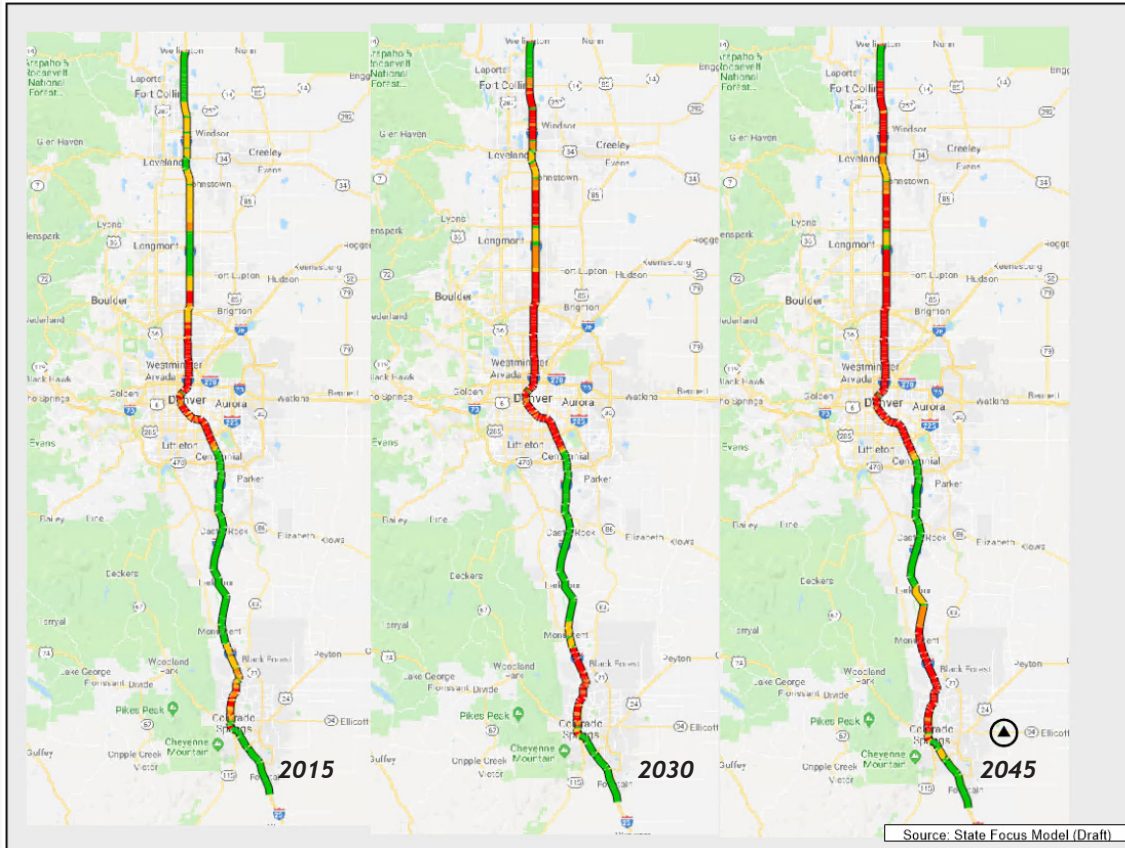
State/County	% Population Change	State/County	# Population Change
Colorado	9.66	Colorado	487,848
Broomfield	18.1%	Denver	88,413
Weld	15.8%	El Paso	62,975
Denver	14.6%	Arapahoe	62,435
Douglas	14.35%	Adams	53,962
Larimer	12.7%	Douglas	41,206

Front Range counties are experiencing significant population growth. Additionally, by 2030, Colorado's population 65+ will be 77% larger than it was in 2015, increasing from 719,000 to 1,270,000.

Source: Colorado Department of Local Affairs



FRONT RANGE CONGESTION



Multiple I-25 roadway segments in red will suffer from severe congestion in the years to come.

Source: CDOT's Statewide Source: Travel Model

In the next 10-years, Front Range morning commuters who currently travel from Ft. Collins to Colorado Springs in around 3 1/2 hours, will see their travel times increase to almost 4 1/2 hours

By the year 2045, that same morning rush hour commute will take over 5 hours with an average speed of 30 miles an hour.

As Colorado's Front Range continues to see growth in both jobs and people, we will all feel the impact of that growth while on our way to work, play, school, and all the other trips we take in our communities and throughout the region. During the statewide plan process, we are looking for you to help identify locations where we need to focus to help make travel easier for you. Please visit YourTransportationPlan.com to help us identify problem locations that affect you the most.